

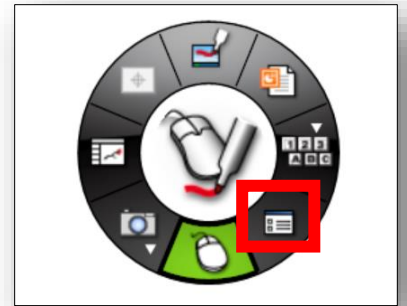
# How to Change Functions of the eBeam Stylus

The eBeam Interactive Stylus has two buttons. Each is programmed to perform a function. These directions explain how users can change the function of the two buttons on the stylus to meet their individual needs.

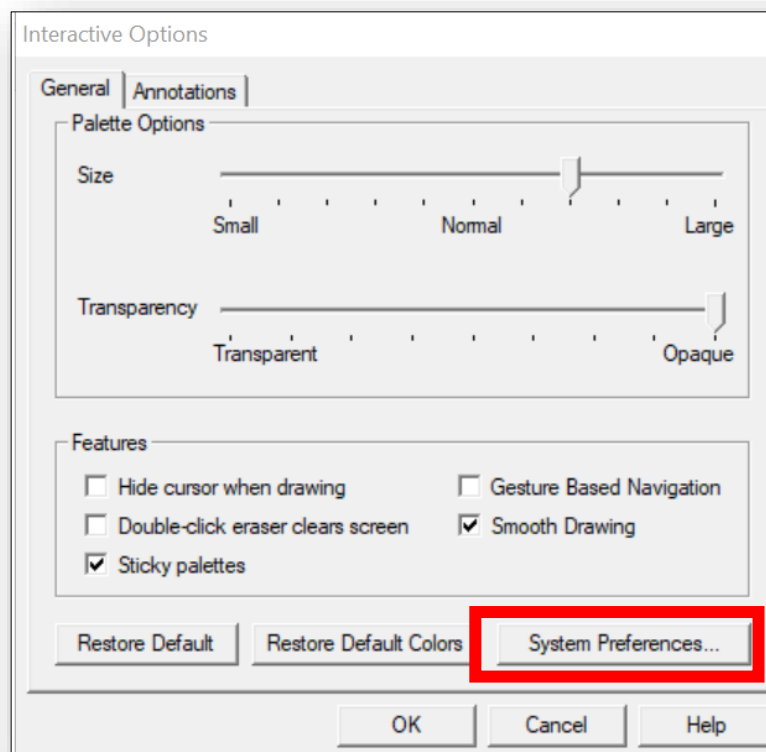
1. Connect laptop to an eBeam Interactive Whiteboard.

*Note: The options needed to change functions on the stylus are only present when connected to an eBeam Interactive Whiteboard.*

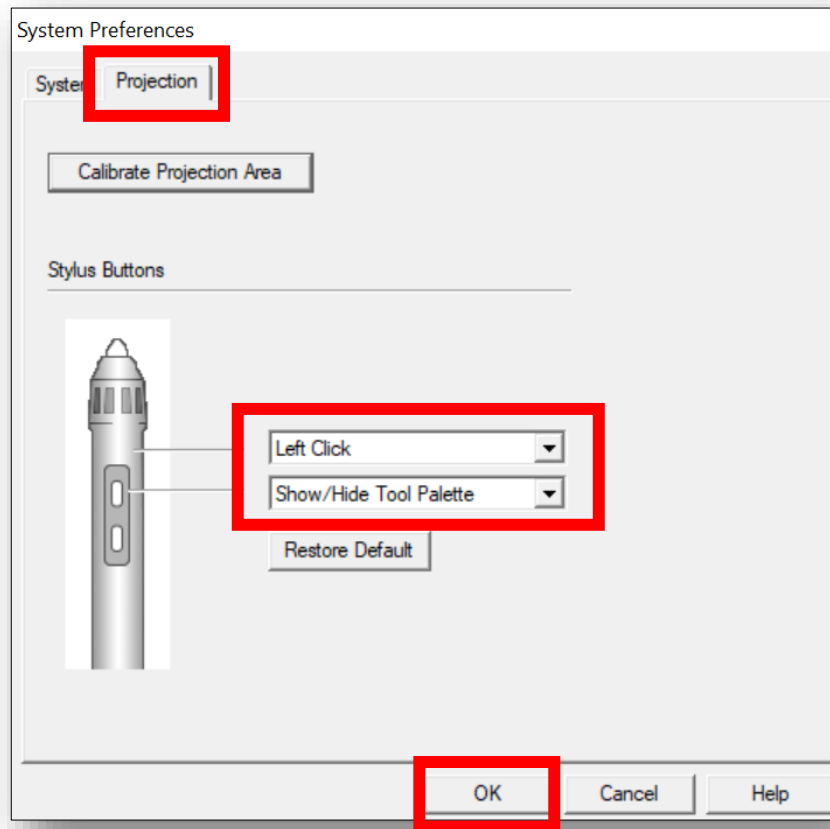
2. On the eBeam Desktop Tool Palette, select the **Settings** button.



3. On the Interactive Options dialog box, click **System Preferences** in the lower right corner.



4. In the System Preferences dialog box, click the **Projection** tab.



5. Navigate to the Stylus Buttons section. For each button, it is possible to set the button to be:

- **Off** - Button causes no action
- **Left Click** - Left mouse click
- **Middle Click** - Middle mouse click
- **Right Click** - Right mouse click
- **Move Cursor** - Causes the mouse cursor to hover
- **Show/Hide Tool Palette** – Open/close the eBeam Tool Palette

6. Select drop-down menus for each button and choose the desired option for each.

7. Click **OK**.

8. Point the stylus at the board and press the button to use the programmed function.

*Note: The buttons on the stylus work within a proximity of 2 to 3 feet from the eBeam Interactive Whiteboard. You do not need to touch the board with the stylus. Setting one of the buttons to Left Click will enable users to advance slides in a PowerPoint without directly touching the board or arrows on the Tool Palette.*