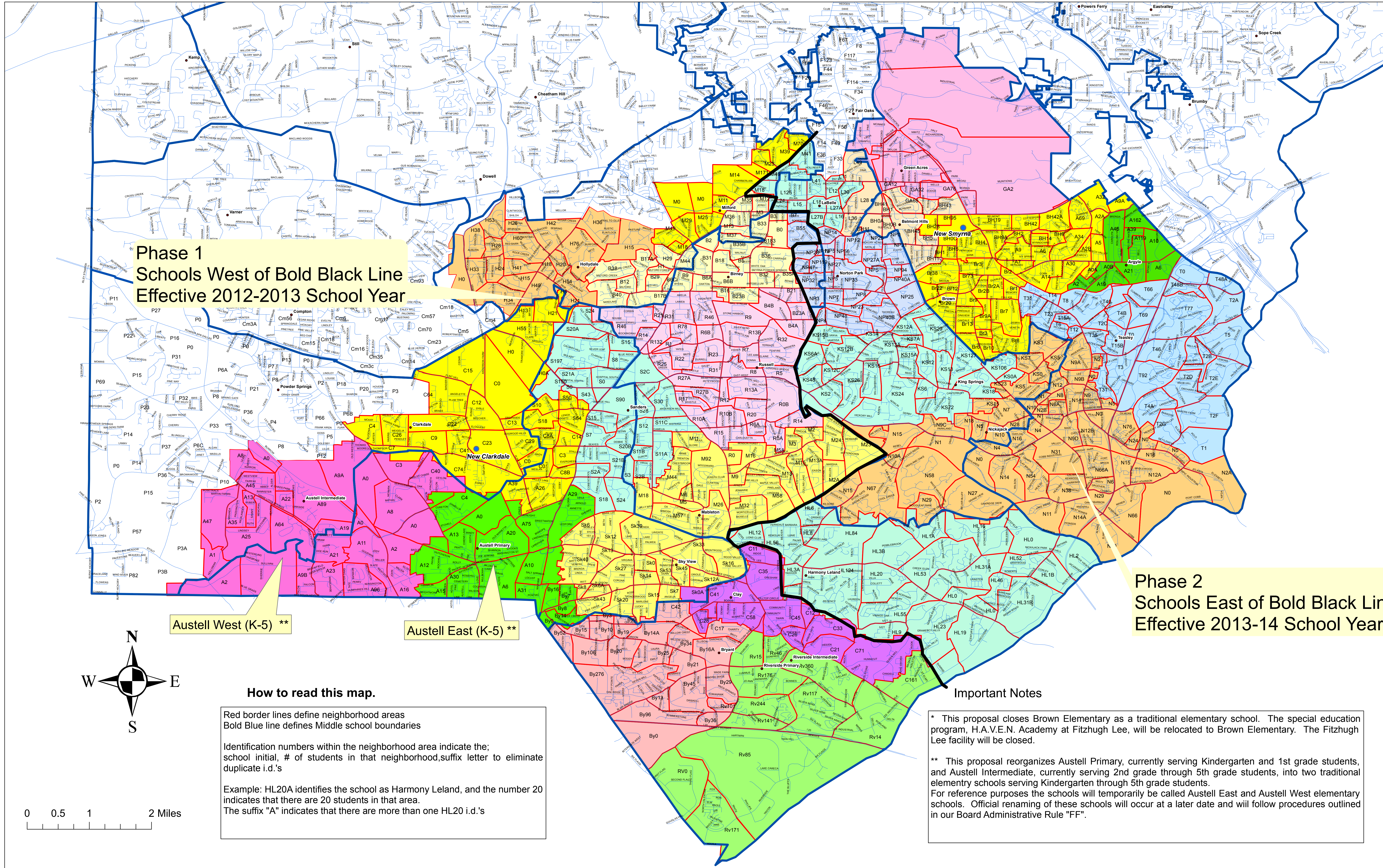


Draft Plan Round 3

Cobb County School District South County Elementary Neighborhood Map

School Closings

- Brown / Fitzhugh Lee *
- Sky View



Phase 1
Schools West of Bold Black Line
Effective 2012-2013 School Year

Phase 2
Schools East of Bold Black Line
Effective 2013-14 School Year

Austell West (K-5) **

Austell East (K-5) **

How to read this map.

Red border lines define neighborhood areas
 Bold Blue line defines Middle school boundaries

Identification numbers within the neighborhood area indicate the; school initial, # of students in that neighborhood, suffix letter to eliminate duplicate i.d.'s

Example: HL20A identifies the school as Harmony Leland, and the number 20 indicates that there are 20 students in that area.
 The suffix "A" indicates that there are more than one HL20 i.d.'s

Important Notes

* This proposal closes Brown Elementary as a traditional elementary school. The special education program, H.A.V.E.N. Academy at Fitzhugh Lee, will be relocated to Brown Elementary. The Fitzhugh Lee facility will be closed.

** This proposal reorganizes Austell Primary, currently serving Kindergarten and 1st grade students, and Austell Intermediate, currently serving 2nd grade through 5th grade students, into two traditional elementary schools serving Kindergarten through 5th grade students. For reference purposes the schools will temporarily be called Austell East and Austell West elementary schools. Official renaming of these schools will occur at a later date and will follow procedures outlined in our Board Administrative Rule "FF".

